



PUBLIC BUILDING COMMISSION

BRIGHTON PARK II ELEMENTARY SCHOOL



BRIGHTON PARK II ELEMENTARY SCHOOL



PUBLIC BUILDING COMMISSION

BRIGHTON PARK II ELEMENTARY SCHOOL

AGENDA

INTRODUCTION

ERIN LAVIN CABONARGI, *EXECUTIVE DIRECTOR, PBC*

DEMOGRAPHICS & BOUNDARIES

JIMM DISPENSA, *SCHOOL DEMOGRAPHICS AND PLANNING, CPS*

BUILDING DESIGN

ERIN LAVIN CABONARGI, *EXECUTIVE DIRECTOR, PBC*

QUESTION AND ANSWER



PUBLIC BUILDING COMMISSION
BRIGHTON PARK II ELEMENTARY SCHOOL

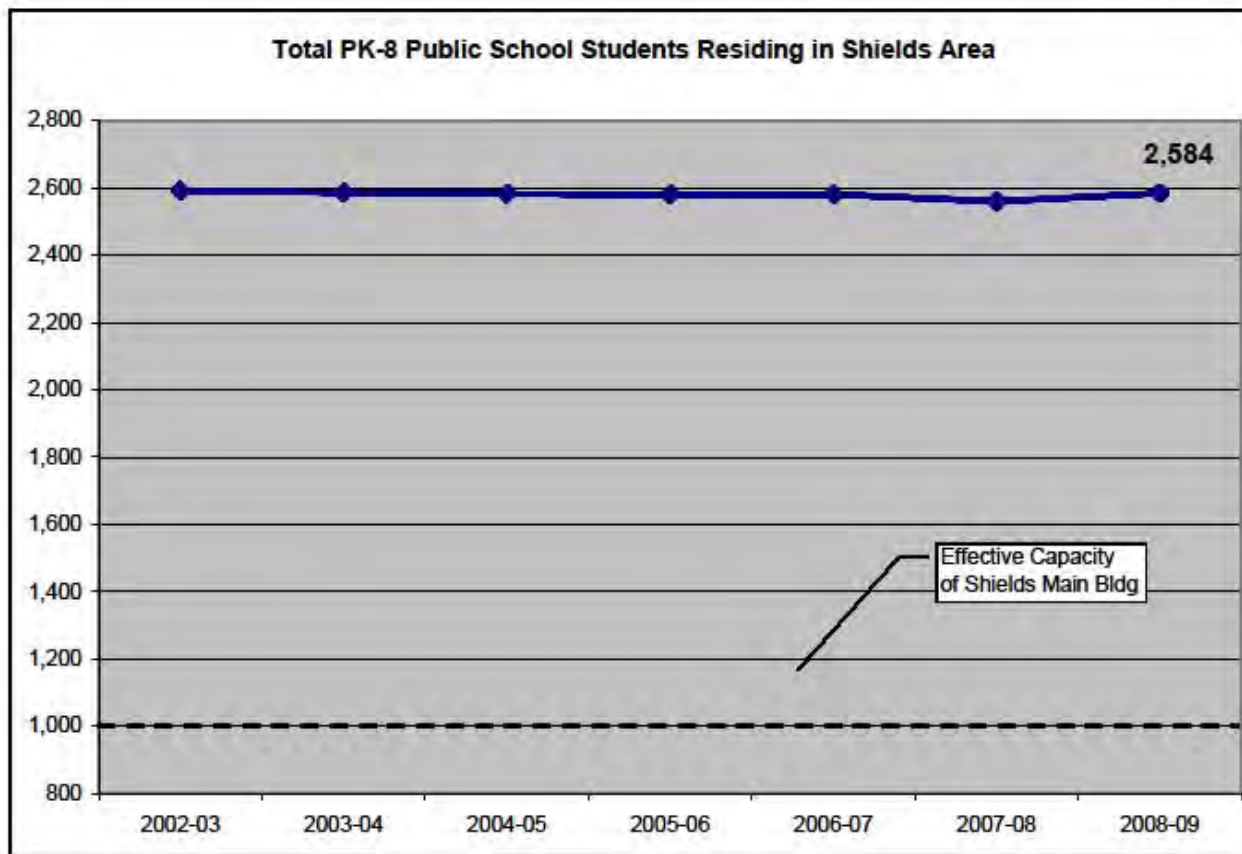
CPS PRESENTATION ON DEMOGRAPHICS & BOUNDARIES

JIMM DISPENSA
*CPS DIRECTOR OF
DEMOGRAPHICS AND PLANNING*



PUBLIC BUILDING COMMISSION

BRIGHTON PARK II ELEMENTARY SCHOOL





PUBLIC BUILDING COMMISSION

BRIGHTON PARK II ELEMENTARY SCHOOL



BRIGHTON PARK II ELEMENTARY SCHOOL



PUBLIC BUILDING COMMISSION
BRIGHTON PARK II ELEMENTARY SCHOOL

PBC PRESENTATION ON BUILDING DESIGN

ERIN LAVIN CABONARGI
EXECUTIVE DIRECTOR, PBC



PUBLIC BUILDING COMMISSION

BRIGHTON PARK II ELEMENTARY SCHOOL

Brighton Park II Area Elementary - 48th & Rockwell



- Proposed Site 
- Target TIF Area 
- Ward Boundary 



PUBLIC BUILDING COMMISSION

BRIGHTON PARK II ELEMENTARY SCHOOL



BRIGHTON PARK II ELEMENTARY SCHOOL



PUBLIC BUILDING COMMISSION

BRIGHTON PARK II ELEMENTARY SCHOOL



©2004 James Steinkamp: Steinkamp/Ballogg Photography





PUBLIC BUILDING COMMISSION

BRIGHTON PARK II ELEMENTARY SCHOOL





PUBLIC BUILDING COMMISSION

BRIGHTON PARK II ELEMENTARY SCHOOL





PUBLIC BUILDING COMMISSION

BRIGHTON PARK II ELEMENTARY SCHOOL



©2004 James Steinkamp: Steinkamp/Ballogg Photography



©2004 James Steinkamp: Steinkamp/Ballogg Photography



PUBLIC BUILDING COMMISSION

BRIGHTON PARK II ELEMENTARY SCHOOL



©2004 James Steinkamp: Steinkamp/Ballogg Photography



©2004 James Steinkamp: Steinkamp/Ballogg Photography



PUBLIC BUILDING COMMISSION

BRIGHTON PARK II ELEMENTARY SCHOOL



©2004 James Steinkamp: Steinkamp/Ballogg Photography





PUBLIC BUILDING COMMISSION

BRIGHTON PARK II ELEMENTARY SCHOOL





PUBLIC BUILDING COMMISSION

BRIGHTON PARK II ELEMENTARY SCHOOL



©2004 James Steinkamp: Steinkamp/Ballogg Photography



PUBLIC BUILDING COMMISSION

BRIGHTON PARK II ELEMENTARY SCHOOL





PUBLIC BUILDING COMMISSION

BRIGHTON PARK II ELEMENTARY SCHOOL



MARK T. SKINNER ELEMENTARY SCHOOL



PUBLIC BUILDING COMMISSION

BRIGHTON PARK II ELEMENTARY SCHOOL





PUBLIC BUILDING COMMISSION

BRIGHTON PARK II ELEMENTARY SCHOOL



BOONE CLINTON ELEMENTARY SCHOOL



PUBLIC BUILDING COMMISSION

BRIGHTON PARK II ELEMENTARY SCHOOL



BRIGHTON PARK I ELEMENTARY SCHOOL



PUBLIC BUILDING COMMISSION

BRIGHTON PARK II ELEMENTARY SCHOOL



LEE PASTEUR HURLEY ELEMENTARY SCHOOL



PUBLIC BUILDING COMMISSION

BRIGHTON PARK II ELEMENTARY SCHOOL



POWELL ELEMENTARY SCHOOL



PUBLIC BUILDING COMMISSION

BRIGHTON PARK II ELEMENTARY SCHOOL



SOUTHWEST AREA MIDDLE SCHOOL



PUBLIC BUILDING COMMISSION

BRIGHTON PARK II ELEMENTARY SCHOOL

PROJECT PROGRAM:

- 900 Student Capacity
- 24 Academic Classrooms
- 6 Pre-K / Kindergarten Classrooms
- 2 Multi-Purpose Rooms
- 1 Science Classroom
- 1 Computer Classroom
- 1 Music Classroom
- 1 Art Classroom
- 1 Administrative Center
- 1 Nurses Suite
- 1 Student Services Area
- 1 Library / Resource Center
- 1 Gymnasium & Stage
- 1 Student Dining Facility
- 1 Kitchen and Dining Facility
- Area for Play Lot
- Off-Site Parking Lot for 30 Spaces
- 50% Green Roof



PUBLIC BUILDING COMMISSION

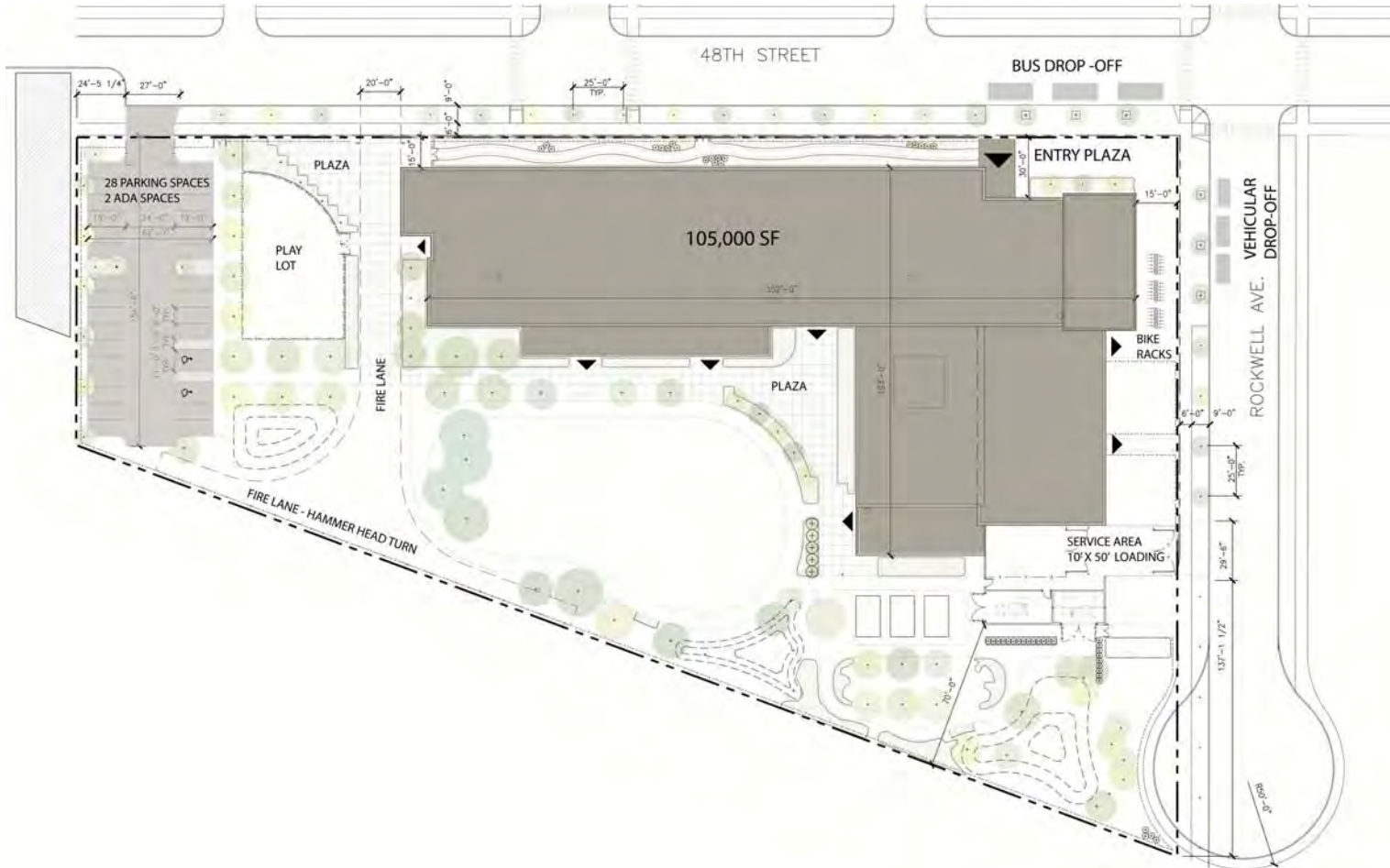
BRIGHTON PARK II ELEMENTARY SCHOOL



SITE IMAGES



PUBLIC BUILDING COMMISSION BRIGHTON PARK II ELEMENTARY SCHOOL





PUBLIC BUILDING COMMISSION

BRIGHTON PARK II ELEMENTARY SCHOOL



EXTENSIVE GREEN ROOF

GROSS ROOF AREA:	42,326 SF
NET ROOF AREA :	38,595 SF
50% REQUIRED GREEN ROOF:	19,289 SF
PROPOSED GREEN ROOF:	19,289 SF



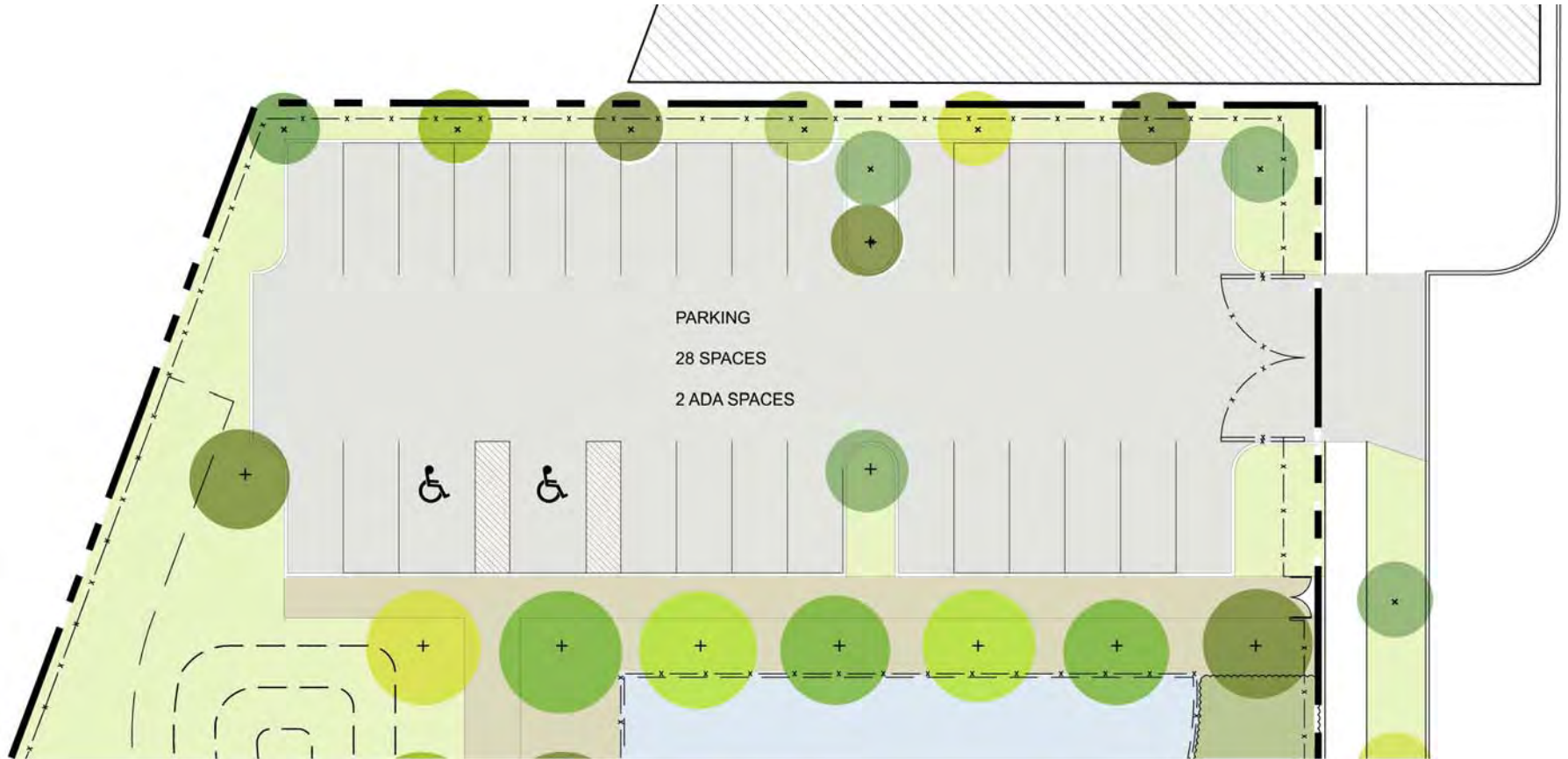
LANDSCAPE PLAN





PUBLIC BUILDING COMMISSION

BRIGHTON PARK II ELEMENTARY SCHOOL





PUBLIC BUILDING COMMISSION

BRIGHTON PARK II ELEMENTARY SCHOOL





PUBLIC BUILDING COMMISSION

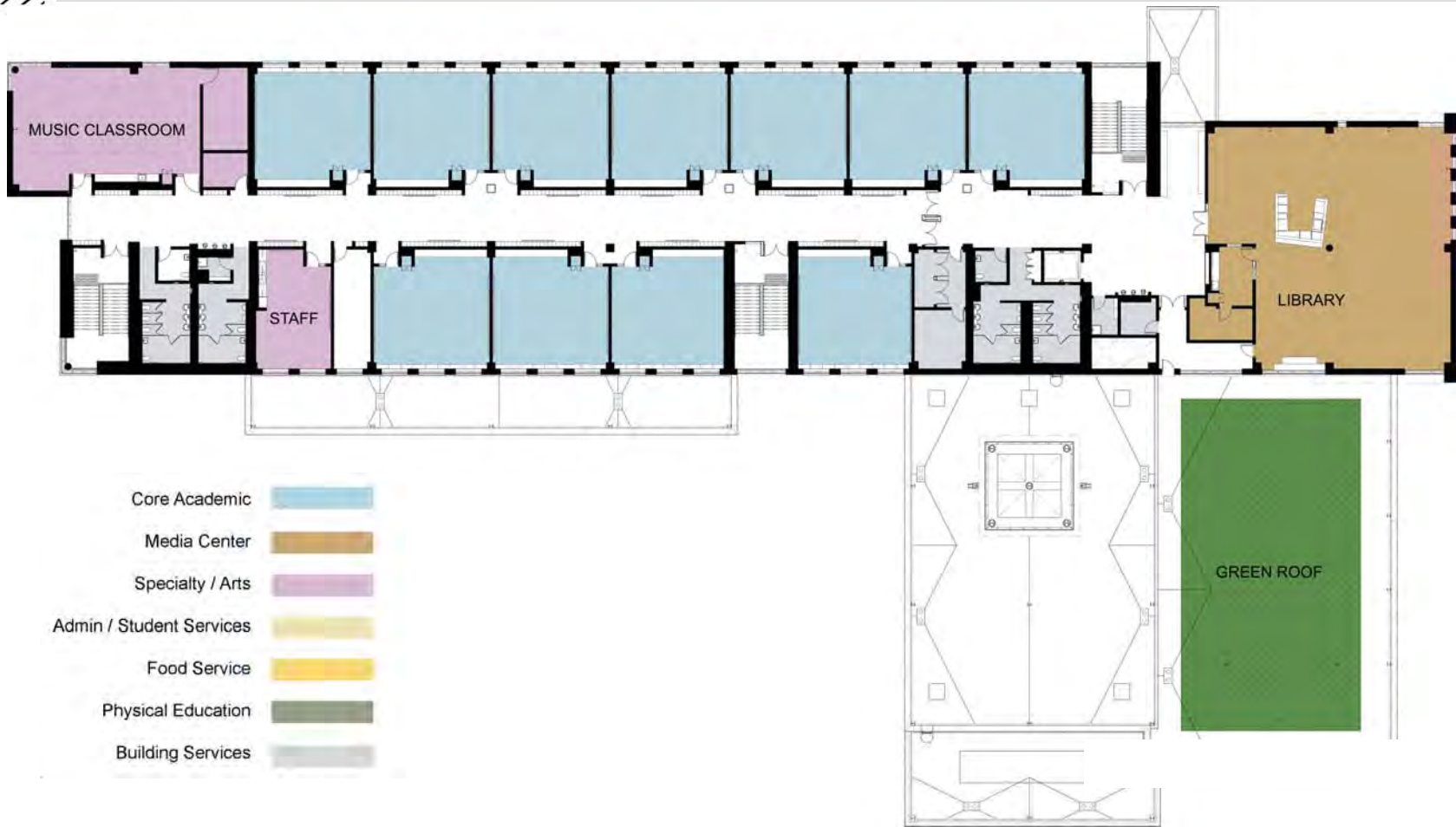
BRIGHTON PARK II ELEMENTARY SCHOOL





PUBLIC BUILDING COMMISSION

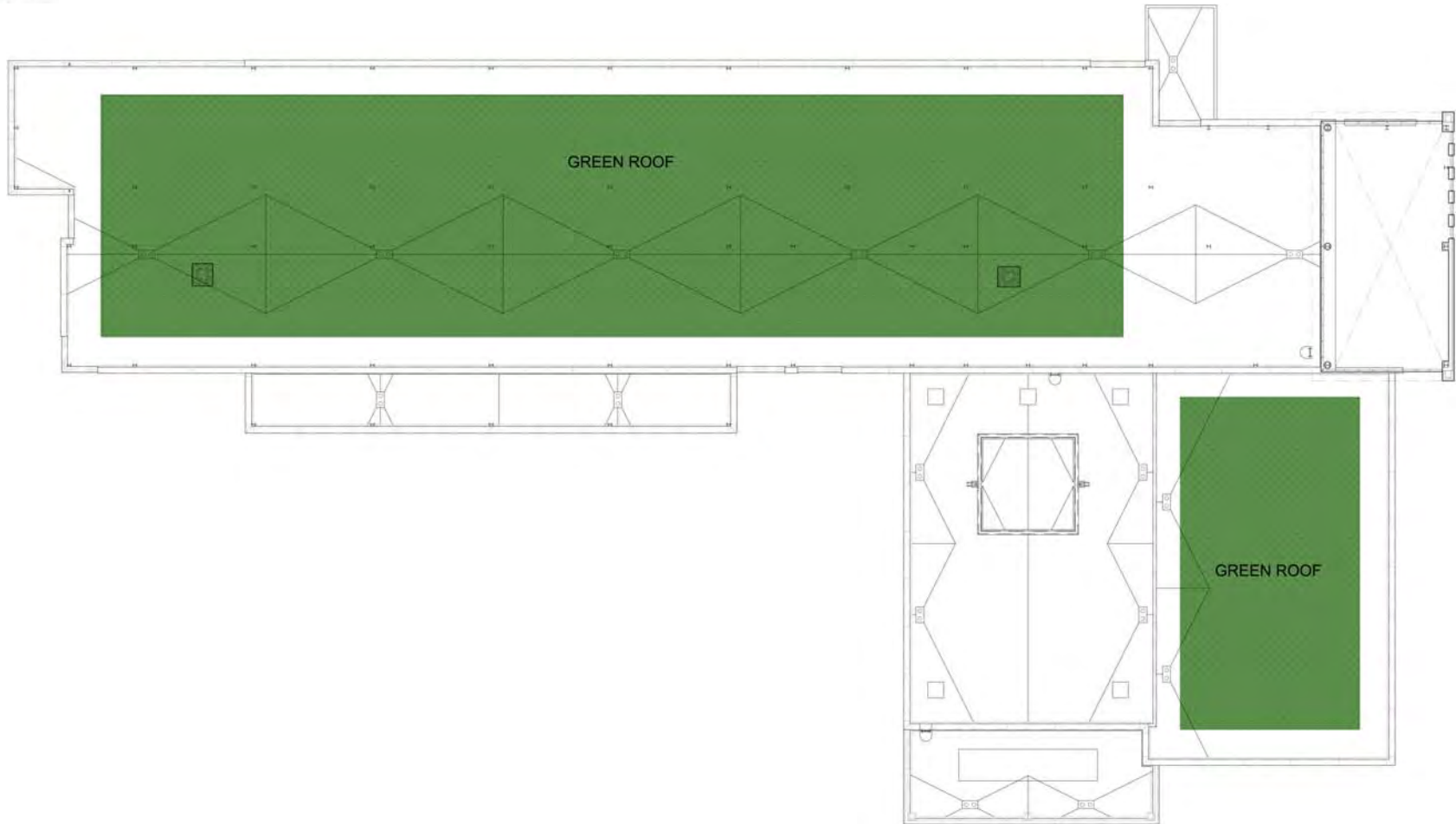
BRIGHTON PARK II ELEMENTARY SCHOOL





PUBLIC BUILDING COMMISSION

BRIGHTON PARK II ELEMENTARY SCHOOL





PUBLIC BUILDING COMMISSION

BRIGHTON PARK II ELEMENTARY SCHOOL



NORTH ELEVATION

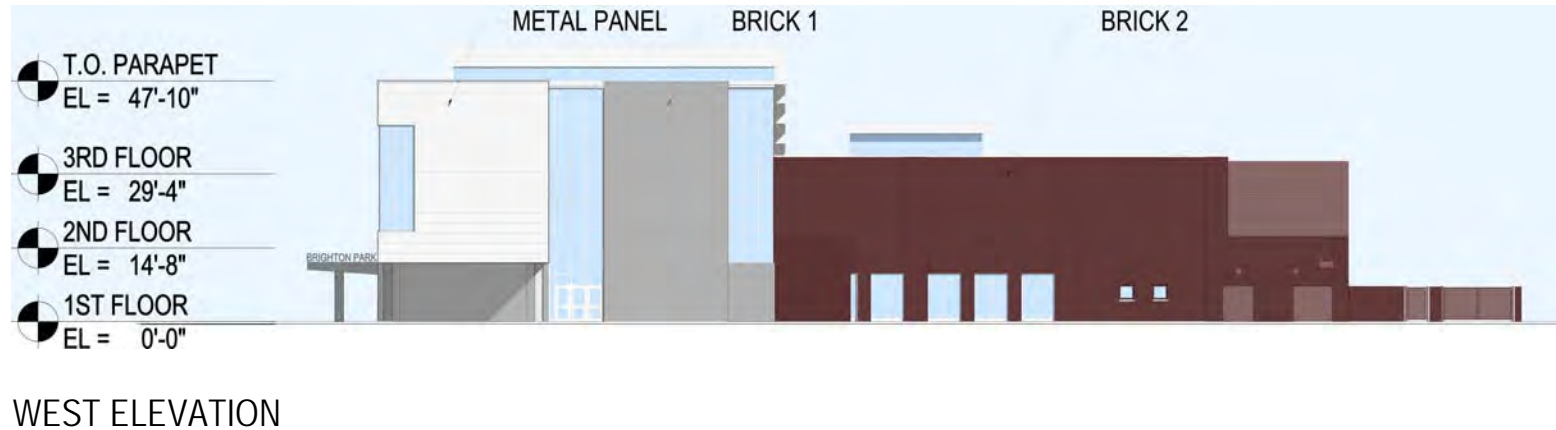
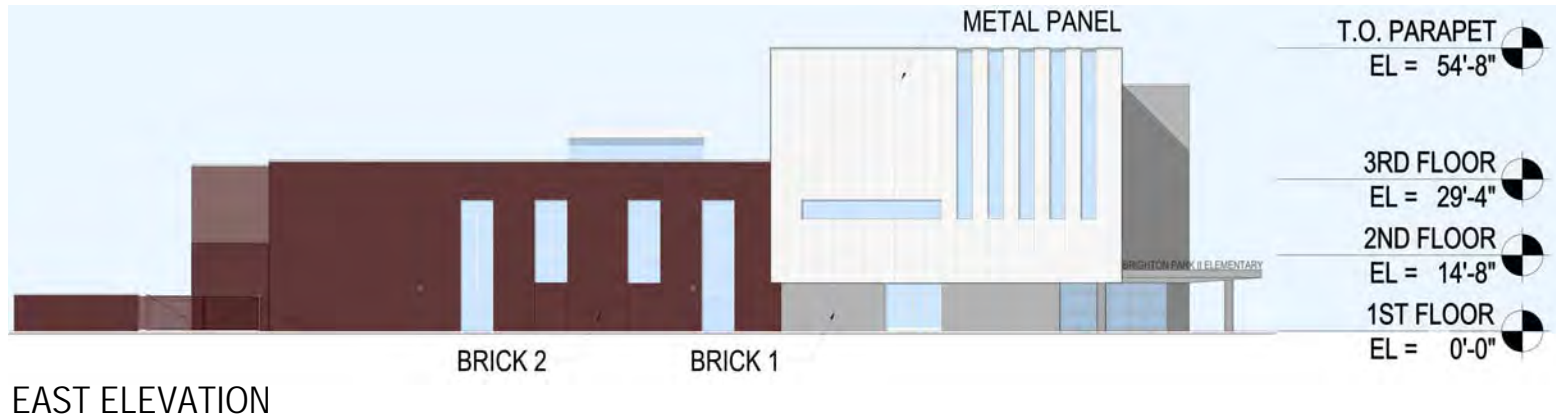


SOUTH ELEVATION



PUBLIC BUILDING COMMISSION

BRIGHTON PARK II ELEMENTARY SCHOOL





PUBLIC BUILDING COMMISSION

BRIGHTON PARK II ELEMENTARY SCHOOL



BRIGHTON PARK II ELEMENTARY SCHOOL



PUBLIC BUILDING COMMISSION

BRIGHTON PARK II ELEMENTARY SCHOOL

PROJECT DEVELOPMENT SCHEDULE:

JUNE 15, 2006	MODERN SCHOOLS ACROSS CHICAGO ANNOUNCEMENT
DECEMBER 13, 2006	CITY COUNCIL PASSES PROJECT FUNDING RESOLUTION
2007-2008	CONCEPTUAL DESIGN AND TESTING
FEBRUARY-OCTOBER 2009	DEMOLITION, DEVELOPMENT OF CONSTRUCTION DOCUMENTS
JUNE 30, 2009	LAND ACQUISITION
JULY 8, 2009	COMMUNITY MEETING
JULY 15, 2009	CHICAGO PLAN COMMISSION HEARING
JULY 16, 2009	COMMITTEE ON ZONING HEARING
AUGUST-OCTOBER	SITE PREPARATION
NOVEMBER 2009	ISSUE FOR BID (TENTATIVE)
DECEMBER 2009	PERMIT ISSUE (TENTATIVE)
FEBRUARY 2010	CONSTRUCTION START (TENTATIVE)
JUNE 2011	CONSTRUCTION COMPLETE (TENTATIVE)
JUNE-AUGUST 2011	LICENSING, OCCUPANCY PERMIT, FURNITURE & EQUIPMENT INSTALL (TENTATIVE)
SEPTEMBER 2011	NEW SCHOOL FACILITY OPENS (TENTATIVE)



PUBLIC BUILDING COMMISSION

BRIGHTON PARK II ELEMENTARY SCHOOL

PUBLIC HEARINGS:

JULY 15, 2009 CHICAGO PLAN COMMISSION
CITY HALL
121 N. LASALLE, 2ND FLOOR
CITY COUNCIL CHAMBERS
1:00 P.M.

JULY 16, 2009 ZONING COMMITTEE
CITY HALL
121 N. LASALLE, 2ND FLOOR
CITY COUNCIL CHAMBERS
10:00 P.M.



PUBLIC BUILDING COMMISSION BRIGHTON PARK II ELEMENTARY SCHOOL



QUESTION & ANSWER

